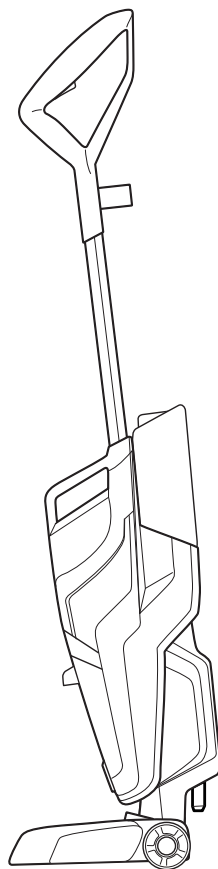
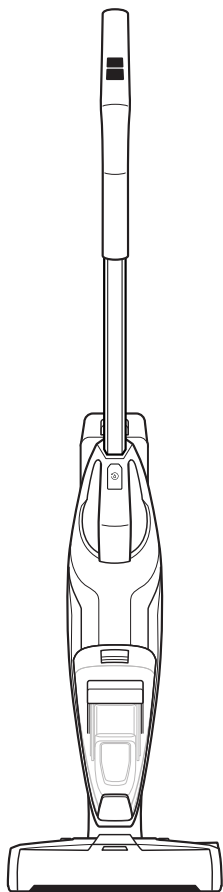


CROSSWAVE® CORDLESS

USER GUIDE
2551 SERIES



IMPORTANT SAFETY INSTRUCTIONS

WARNING: READ ALL SAFETY WARNINGS AND INSTRUCTIONS BEFORE USING YOUR CROSSWAVE® CORDLESS.

Failure to follow the warnings and instructions may result in electric shock, fire and/or serious injury. Unplug from outlet when not in use and before conducting maintenance. When using an electrical appliance, basic precautions should be observed, including the following:

WARNING

TO REDUCE THE RISK OF FIRE, ELECTRIC SHOCK, OR INJURY:

- » Use indoors only.
- » Do not allow to be used as a toy. Close attention is necessary when used by or near children.
- » Do not use for any purpose other than described in this User's Guide. Use only manufacturer's recommended attachments.
- » Do not charge with damaged cord or plug.
- » Do not unplug by pulling on cord. To unplug, grasp the charger, not the cord.
- » Do not handle 3-in-1 docking station, charging plug, or appliance with wet hands.
- » Do not put any object into openings. Do not use with any opening blocked; keep openings free of dust, lint, hair, and anything that may reduce air flow.
- » Keep hair, loose clothing, fingers, and all parts of body away from openings and moving parts of the appliance and its accessories.
- » Use extra care when cleaning on stairs.
- » Do not use to pick up flammable or combustible materials (lighter fluid, gasoline, kerosene, etc.) or use in areas where they may be present.
- » Do not use appliance in an enclosed space filled with vapors given off by oil base paint, paint thinner, some moth-proofing substances, flammable dust, or other explosive or toxic vapors.
- » Do not use to pick up toxic material (chlorine bleach, ammonia, drain cleaner, etc.).
- » Do not pick up anything that is burning or smoking, such as cigarettes, matches, or hot ashes.
- » Always install float before any wet pick-up operation.
- » Do not pick up hard or sharp objects such as glass, nails, screws, coins, etc.
- » Use only BISSELL® cleaning products intended for use with this appliance to prevent internal component damage. See the Cleaning Formulas section of this guide.
- » Keep appliance on a level surface.
- » Do not carry the appliance while in use.
- » Do not immerse. Use only on surfaces moistened by the cleaning process.
- » Plastic film can be dangerous. To avoid danger of suffocation, keep away from babies and children.
- » Always connect to a proper electrical socket.
- » Keep cord away from heated surfaces.
- » Do not use without filters in place.
- » Turn off all controls before plugging or unplugging appliance.
- » Do not charge the unit outdoors.
- » Do not incinerate the appliance even if it is severely damaged. The batteries can explode in a fire.

- » Use only with charger SIL, Model SSC-420085US.
- » Recharge appliance only with the charger specified by the manufacturer. A charger that is suitable for one type of battery pack may create a risk of injury and fire when used with another battery pack.
- » When battery pack is not in use, keep it away from other metal objects, like paper clips, coins, keys, nails, screws or other small metal objects, that can make a connection from one terminal to another. Shorting the battery terminals together may cause burns or a fire.
- » Do not use a battery pack or appliance that is damaged or modified. Damaged or modified batteries may exhibit unpredictable behavior resulting in fire, explosion or risk of injury.
- » Do not expose a battery pack or appliance to fire or excessive temperature. Exposure to fire or temperature above 130°C / 265°F may cause explosion.
- » Follow all charging instructions and do not charge the battery pack or appliance outside of the temperature range 40-104°F. Charging improperly or at temperatures outside this range may damage the battery and increase the risk of fire.
- » Prevent unintentional starting. Ensure the switch is in the off-position before connecting to battery pack, picking up or carrying the appliance. Carrying the appliance with your finger on the switch or energizing appliance that have the switch on invites accidents.
- » Under abusive conditions, liquid may be ejected from the battery; avoid contact. If contact accidentally occurs, flush with water. If liquid contacts eyes, additionally seek medical help. Liquid ejected from the battery may cause irritation or burns.

 **WARNING** Do not turn on your appliance on until you are familiar with all instructions and operating procedures.

 **WARNING** Risk of injury from moving parts. Brush may start unexpectedly. Turn off before cleaning or servicing.

SAVE THESE INSTRUCTIONS

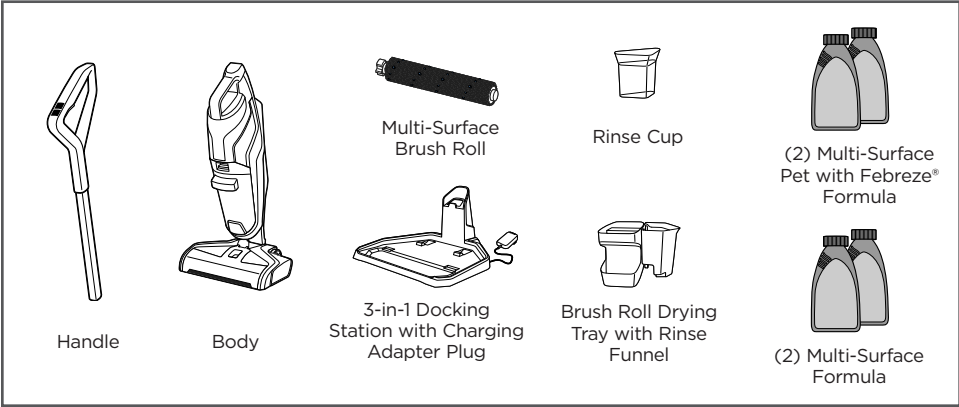
This model is for household use only. Commercial use of this unit voids the manufacturer's warranty.

Thanks for buying a BISSELL® CrossWave® Cordless

We love to clean and we're excited to share one of our innovative products with you. We want your BISSELL® CrossWave® Cordless to work like new for the years to come, so this guide has tips on how to use, maintain and, if there's a problem, troubleshoot.

Your BISSELL® CrossWave® Cordless needs a little assembly before getting to work, so flip to the "operations" section and let's get started!

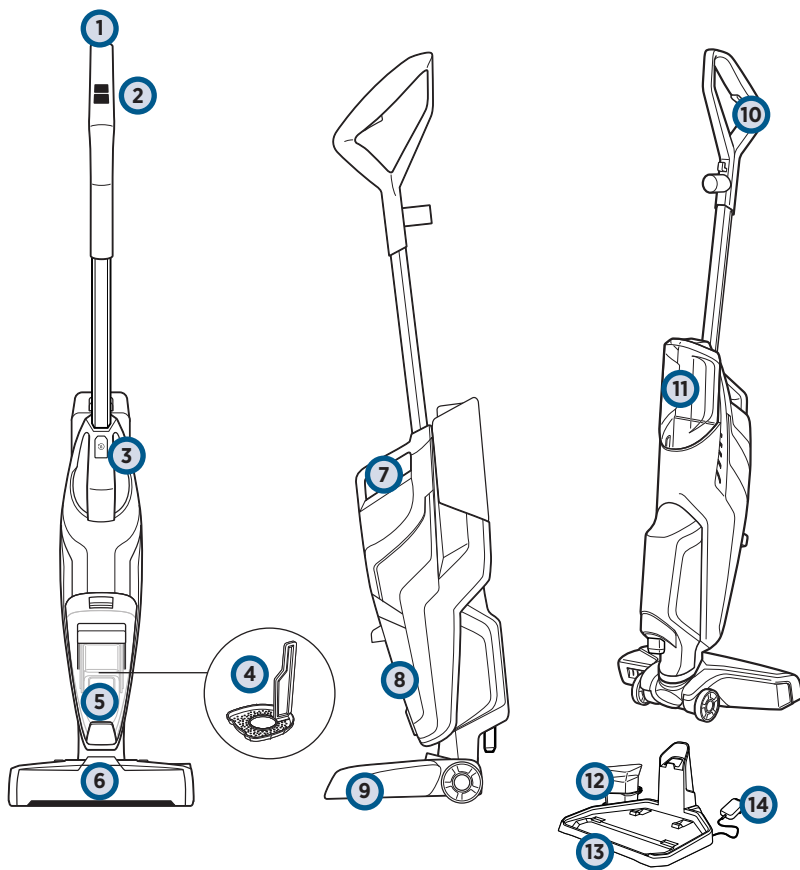
What's In The Box?



NOTE: Standard accessories may vary by model. To identify what should be included with your purchase, please refer to the "Carton Contents" list located on the carton top flap.

Safety Instructions	2	Maintenance & Care	12-15
Product View	4	Troubleshooting	16
Assembly	5	Warranty	17
Cleaning Formulas	5	Service	17
Operations	6-11	Product Registration	18

Getting to Know Your CrossWave® Cordless



- | | |
|--|---------------------------|
| 1 Upper Handle | 8 Dirty Water Tank |
| 2 SmartClean Fingertip Controls | 9 Foot |
| 3 Cleanout Cycle button and Battery Life Indicator | 10 Solution Spray Trigger |
| 4 Strainer | 11 Clean Water Tank |
| 5 Float Stack | 12 Rinse Cup |
| 6 Easy Remove Brush Roll Window | 13 3-in-1 Docking Station |
| 7 Integrated Carry Handle | 14 Charging Adapter Plug |

Your BISSELL® CrossWave® Cordless machine comes in three easy to assemble components and does not require any tools to assemble. The unit also comes with a three-piece 3-in-1 Docking Station.

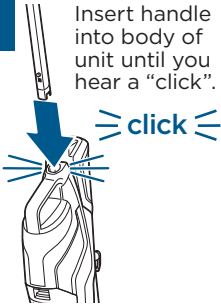
- Handle
- Body
- Clean Water Tank
- 3-in-1 Docking Station
- Brush Roll Drying Tray with Rinse Cup

Assembly

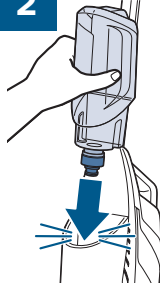
⚠️ WARNING

Do not plug in your CrossWave® Cordless until you are familiar with all instructions and operating procedures.

1 Insert handle into body of unit until you hear a “click”.



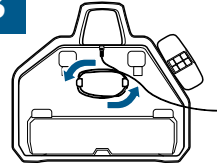
2



Then, on the back of the machine, align Clean Water Tank with the grooves and slide tank into place until you hear a “click”.

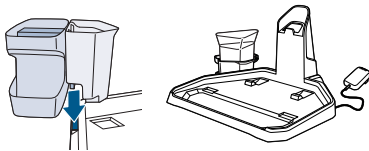


3



Wrap the charging adapter cord around the tabs on the bottom of the 3-in-1 Docking station.

4



Slide the over hang in the middle of the Brush Roll Drying Tray with Rinse Funnel down into the opening on the Storage Tray that is indicated with arrows. Then, place the Rinse Cup into the Rinse Funnel.

NOTE: The 3-in-1 Docking Station functions as a Rinse and Clean Out Tray, Charging Station, and Storage Tray for the machine and Brush Roll.

Cleaning Formulas

⚠️ WARNING

To reduce the risk of fire and electric shock due to internal component damage, use only BISSELL® cleaning fluids intended for use with the hard floor device.

Keep plenty of CrossWave® formulas on hand so you can clean your hard floors and area rugs whenever it fits your schedule.

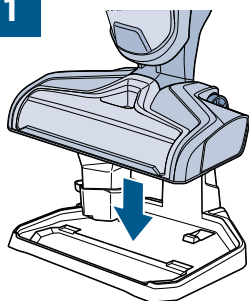
Always use CrossWave® formulas in your machine. Other solutions may harm the machine and void the warranty.

CROSSWAVE® FORMULAS

			
Multi-Surface Formula	Wood Floor Formula	Area Rug Formula	Multi-Surface Pet with Febreze® Formula
Great for cleaning ALL sealed floors and area rugs	Restore your wood floors' natural shine	Removes stuck on and embedded dirt from area rugs	Removes pet odors to clean and refresh

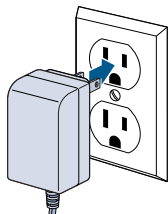
Charging the Battery

1



Lift and place your CrossWave® Cordless onto the 3-in-1 Docking Station to charge.

2



Plug the adapter into a suitable wall outlet. The Battery Life Indicator Lights will illuminate when charging. If LED lights do not turn on, realign the unit on the 3-in-1 Docking Station.

3



For maximum run time, charge unit for 4 hours prior to use. Refer to chart below to understand the charging status.

NOTE: Make sure unit is fully charged before first use. To check the battery status, remove the unit from the charging base and turn the unit ON by pressing either the Area Rug or Hard Floor button. Battery is fully charged when all three white status lights are illuminated.

Charging LED Display

WARNING

Overcharging may cause battery damage, fire or explosion.

Your BISSELL® CrossWave® Cordless has an LED light display that will turn on when the unit is on or charging to show the battery life status. The LED lights are white, but one will be blinking red when the battery is at less than 10%.

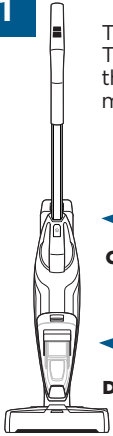
TIP: Be sure to charge unit when there is less than 10% power left, one LED flashing red.

Battery Status	LED Color	Light Behavior
100% to 70%	White	3 lights on
69% to 40%	White	2 lights on
39% to 10%	White	1 light on
9% to 1%	Red	1 light blinking, 2 second fade in and out
0%	N/A	Light off

NOTE: Keep the temperature range between 40-104 °F when charging the battery, storing unit or during use.

Filling the Clean Water Tank

1

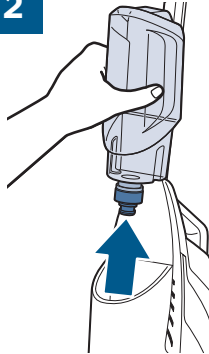


The Clean Water Tank is located on the back of the machine.

Clean Water Tank

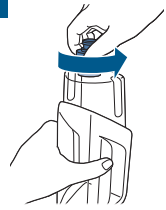
Dirty Water Tank

2



Lift the Clean Water Tank straight up to remove from the machine.

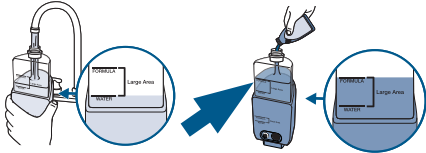
3



Unscrew the cap from the Clean Water Tank.

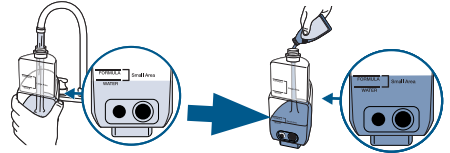
The Clean Water Tank has two measuring volumes depending on the amount of space you would like to clean.

4



For large area cleaning (up to 700 sq ft)

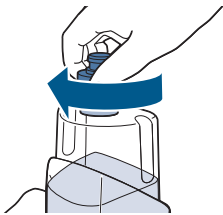
- Fill Clean Water Tank with warm tap water to the second water fill line.
- Then add formula to the second formula fill line.



For small area cleaning (<350 sq ft)

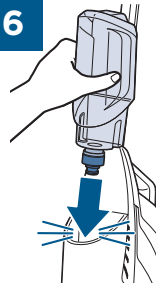
- Fill Clean Water Tank with warm tap water to the first water fill line.
- Then add formula to the first formula fill line.

5



Screw the cap back onto the Clean Water Tank.

6



On the back of the machine, align Clean Water Tank with the grooves and slide tank into place until you hear a "click".

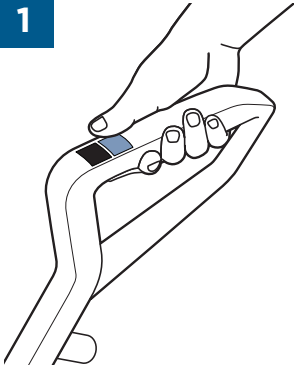
click

A few notes about filling the Clean Water Tank:

- Fill with warm (140°F/60°C MAX) tap water and add the appropriate BISSELL® solution. **DO NOT USE BOILING WATER. DO NOT HEAT WATER OR TANK IN MICROWAVE.**

Cleaning Hard Floors

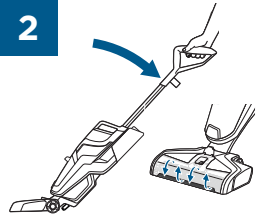
1



Select cleaning mode:

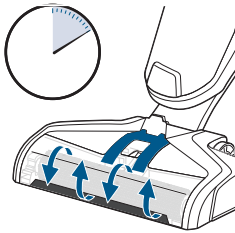
To start cleaning your hard floors, turn the machine ON pressing the **HARD FLOOR** button. Once the setting is selected, the dry vacuum will turn on. To turn OFF, press the **HARD FLOOR** setting a second time.

2



Recline the body of the machine backward to start the Brush Roll spinning. To stop the Brush Roll spinning, you will need to stand the machine upright.

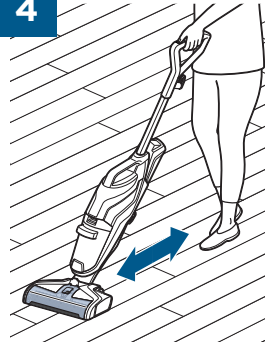
3



Before each use, hold the Solution Spray Trigger for 10 seconds to prime the system with cleaning solution. LED lights illuminate when holding the trigger.

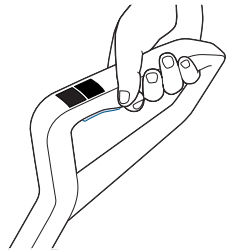
NOTE: When solution is flowing, you will see bubbles forming at the edges of the Brush Roll Window.

4



To clean, hold the Solution Spray Trigger to apply solution on both forward and backward passes.

5



To dry hard floors faster, release the trigger and clean a second pass without dispensing solution.

TIP: When cleaning excessively dirty or muddy hard floors, or if your Brush Roll looks dirty, use the 3-in-1 Docking Station to rinse your Brush Roll before cleaning your area rugs.

TIP: For overly challenging and stuck-on messes on your hard floors, activate the RUG mode and hold your CrossWave® Cordless over the mess. Using short passes while holding the trigger allows the multi-surface brush to go to work.

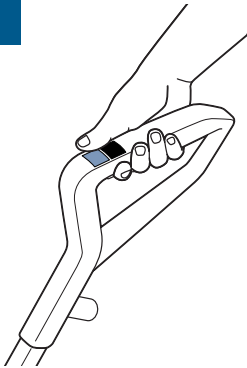
Cleaning Area Rugs

ATTENTION

Do not over wet carpet. Be careful not to run over loose objects or edges of area rugs. Stalling the brush may result in premature belt failure.

NOTE: Before cleaning area rugs, test an inconspicuous area of the rug for colorfastness. Also, please check manufacturer's tag before cleaning area rugs for any specialized cleaning instructions. Not for use on silk or delicate area rugs.

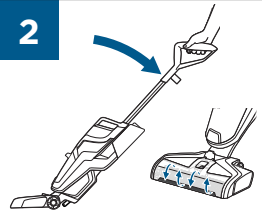
1



Select cleaning mode:

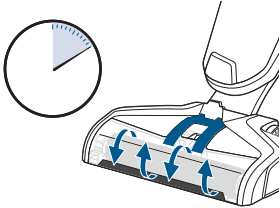
To start cleaning your rugs, turn the machine ON pressing the **RUG** button. Once the setting is selected, the dry vacuum will turn on. To turn OFF, press the **RUG** setting a second time.

2



Recline the body of the machine backward to start the Brush Roll spinning. To stop the Brush Roll spinning, you will need to stand the machine upright.

3



Before each use, hold the Solution Spray Trigger for 10 seconds to prime the system with cleaning solution. LED lights illuminate when holding the trigger.

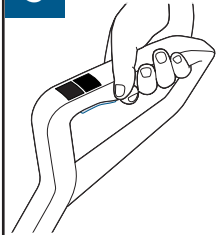
NOTE: When solution is flowing, you will see bubbles forming at the edges of the Brush Roll Window.

4



To clean, hold the Solution Spray Trigger to apply solution on both forward and backward passes.

5



To dry area rugs faster, release the trigger and clean a second pass without dispensing solution.

NOTE: The RUG button dispenses twice the solution of the HARD FLOOR button to help with area rug cleaning.

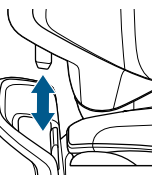
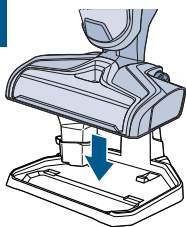
Using the 3-in-1 Docking Station

⚠ WARNING

To reduce the risk of fire, electric shock or injury, turn power OFF and disconnect plug from electrical outlet before performing maintenance or troubleshooting.

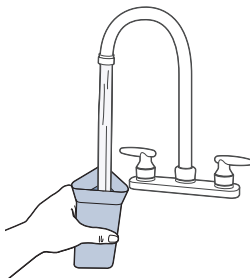
NOTE: The unit will begin to charge once it is docked, assuming the 3-in-1 Docking Station is plugged in. Charging will pause when running the Clean Out cycle. Once the Clean Out cycle is complete, charging will resume.

1



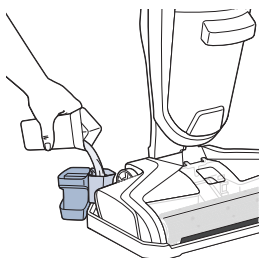
Place unit on 3-in-1 Docking Station.

2



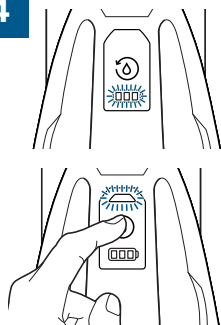
Fill Rinse Cup with water.

3



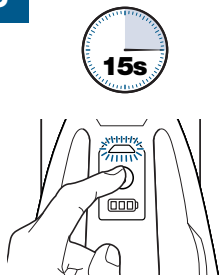
Pour water into the Rinse Funnel on the 3-in-1 Docking Station to the MAX fill line.

4



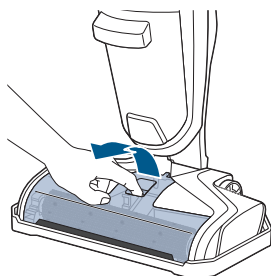
Hold down Clean Out button on top of the Carry Handle. The cycle only runs when the button is held down.

5



Hold down Clean Out button for about 10 to 15 seconds to allow unit to flush out and pick up all the water. Repeat as needed.

6



Grasp Brush Roll Window at the front of the window face and pull upward to remove.

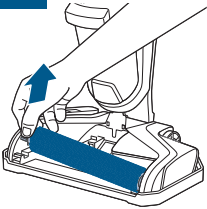
NOTE: The 3-in-1 Docking Station needs to be plugged into an outlet in order to run the clean out cycle. If the Clean Out button is held down over a minute, the unit will stop cleaning automatically.

Using the 3-in-1 Docking Station (cont.)

WARNING

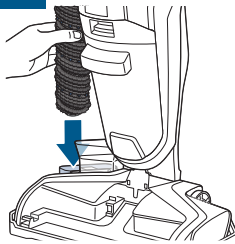
To reduce the risk of fire, electric shock or injury, turn power OFF and disconnect plug from electrical outlet before performing maintenance or troubleshooting.

7



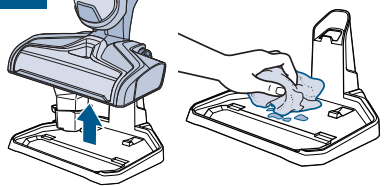
Pull Brush Roll out by grabbing the Brush Roll tab and pulling upward.

8



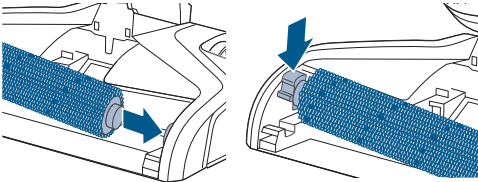
Place the Brush Roll upright in the Brush Roll Drying Tray to dry.

9



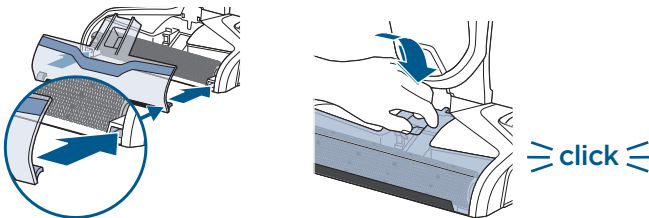
Remove the unit from the 3-in-1 Docking Station and wipe out the tray. Do NOT rinse under faucet directly to avoid water going into the charging plug for safety issues.

10



Replace Brush Roll by inserting the Brush Roll end into the right side of the foot. Then lock the pull tab into place by pressing downward.

11



Replace the Brush Roll Window by first lining up the window tabs with the edges of the foot. Then press the window back into place until you hear a "click".

Machine Storage

Put the unit away in a closet or basement until the next use. Store cleaner in a protected, dry area.

NOTE: Any solution remaining in the Clean Water Tank should be emptied prior to machine storage.

NOTICE

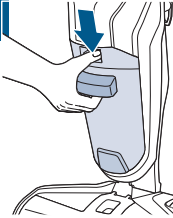
To reduce the risk of a leaking condition, do not store unit where freezing may occur. Damage to internal components may result.

Emptying the Dirty Water Tank

⚠️ WARNING

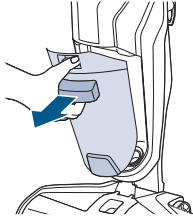
To reduce the risk of fire, electric shock or injury, turn power OFF and disconnect plug from electrical outlet before performing maintenance or troubleshooting.

1



To release Dirty Water Tank, press down on recessed button on the top of the tank.

2



Grab the front handle while pressing down on button and pull Dirty Water Tank away from the unit.

3

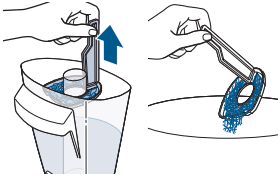


Grasp top of Dirty Water Tank in recessed areas on each side of the filter and pull upward to remove the top of the tank.

Did You Know?

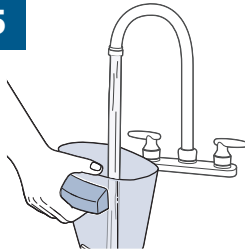
The float is what prevents your Dirty Water Tank from overflowing. When your Dirty Water Tank is full, the float will shut off your suction motor creating a high-pitched sound indicating it is time to empty your Dirty Water Tank.

4



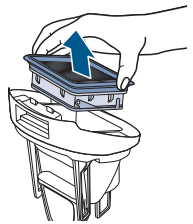
Remove strainer from Dirty Water Tank, then throw debris in trash.

5



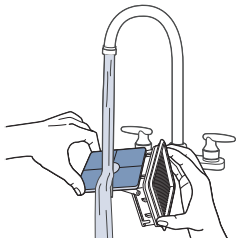
Pour dirty water out into sink. Rinse the inside of the Dirty Water Tank.

6



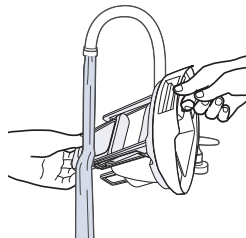
Remove the filter from the top of the Dirty Water Tank by pulling it up.

7



Hand wash the filter and screen with warm water and mild detergent.

8



Rinse the float located at the bottom of the top of the Dirty Water Tank.

Emptying the Dirty Water Tank (cont.)

⚠️ WARNING

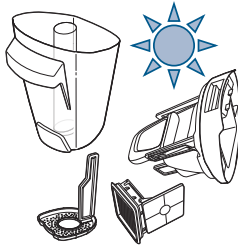
To reduce the risk of fire, electric shock or injury, turn power OFF and disconnect plug from electrical outlet before performing maintenance or troubleshooting.

9



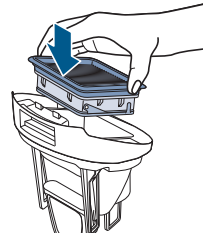
If the inside area where the Dirty Water Tank sits is dirty, wipe it clean with a rag or towel.

10



Leave parts out to dry before reassembling.

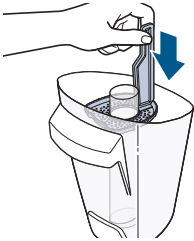
11



Place filter assembly back into the top of the Dirty Water Tank.

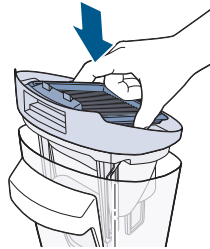
NOTE: Make sure to clean your Dirty Water Tank and let all components dry out after each use to keep your product at its best.

12



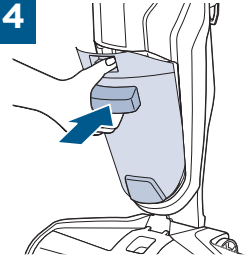
Place strainer back into Dirty Water Tank.

13



Once parts are dry, reassemble and replace the top of Dirty Water Tank.

14



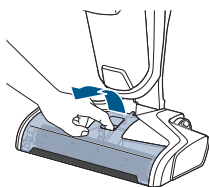
Angle the Dirty Water Tank back into body of machine inserting bottom first. Then tilt the top of the dirt tank toward the machine and push into place until you hear a “click”.

Cleaning the Brush Roll and Chamber

WARNING

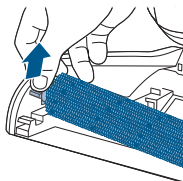
To reduce the risk of fire, electric shock or injury, turn power OFF and disconnect plug from electrical outlet before performing maintenance or troubleshooting.

1



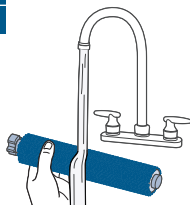
Grasp Brush Roll Window on the front of its face and pull upward to remove.

2



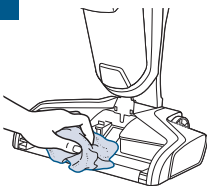
Pull Brush Roll out by grabbing the Brush Roll tab and pulling upward.

3



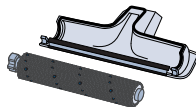
With warm water, rinse your Brush Roll Window and Brush Roll.

4



If your Brush Roll chamber is dirty, clean with a rag or towel.

5

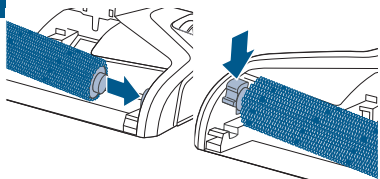


Let your Brush Roll and Brush Roll Window chamber dry before reassembling.

TIP: Running your machine with a wet Brush Roll will help the Brush Roll dry faster. The trigger should not be pressed.

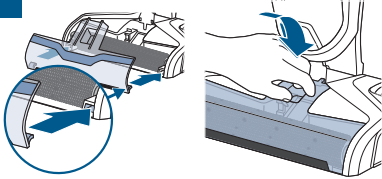
NOTE: The Brush Roll is not dishwasher or automatic washing machine safe. Please follow cleaning instructions above.

6



Replace Brush Roll by inserting the Brush Roll end into the right side of the foot. Then lock the pull tab into place by pressing downward.

7



Replace the Brush Roll Window by first lining up both window tabs with the edges of the foot. Then press the window back into place until you hear a “click”.

Disposing of the Batteries

WARNING

This product contains lithium-ion rechargeable batteries. According to Federal and State regulations, removal and proper disposal of lithium-ion batteries is required. For removal of the batteries in your Crosswave® Cordless, see instructions on this page.

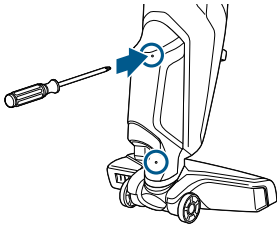


NOTICE: Disconnecting the battery will destroy the appliance and invalidate the warranty.

Before proceeding, ensure that:

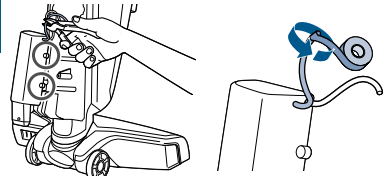
- The unit is disconnected from the 3-in-1 Docking Station
- The Clean and Dirty Water Tank are empty or removed from the unit.
- You have a Phillips-head screwdriver, electrical tape and rubber handled wire cutters. All required for disassembly.

1



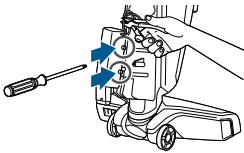
With a Phillips-head screwdriver, remove the 4 screws on the back of the unit. Then, lift off the back cover.

2



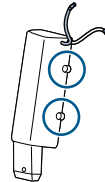
Cut the red positive (+) battery wire with rubber handled wire cutters. Wrap the end of the red cut wire with electrical tape. Then, individually cut the remaining battery wires.

3



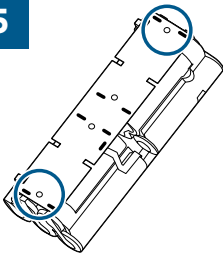
Using a Phillips-head screwdriver, remove the 4 screws on the sides of the battery pack. Then, remove the battery pack from the unit.

4



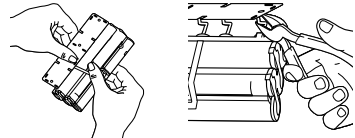
Remove the 4 screws from the battery pack and lift off the top cover to expose the control panel and battery cells.

5



Remove the last two screws on the control panel.

6



Pull the control panel back from the battery pack. Then, with rubber handled wire cutters, clip all the metal poles to disconnect the battery pack from the control panel.

NOTE: Keep Battery Pack together - DO NOT separate individual batteries. For specific disposal instructions of batteries, please contact the RBRC (Rechargeable Battery Recycling Corporation) at 1-800-822-8837 or visit www.Call2Recycle.org.

Troubleshooting

WARNING

To reduce the risk of electric shock, turn power switch OFF and disconnect plug from electrical outlet before performing maintenance or troubleshooting checks.

Problem	Possible Causes	Remedies
Reduced spray OR no spray	Clean Water Tank may be empty	Refill tank
	Clean Water Tank may not be seated completely	Turn power OFF / Remove and reseal tank
	System isn't completely primed	Hold trigger for 10 to 15 seconds
	Brush Roll Window is not latched in place	Turn power OFF / Unplug machine and re-install Brush Roll Window
	Not holding trigger to spray solution	Hold Spray Solution Trigger continuously while using the machine
	Spray tips on foot clogged	Use a pin to clean the spray tips located underneath the Brush Roll Window
Loss of suction power	Tanks may not be seated properly	Turn Power OFF / Remove both tanks and reseal them so they fit properly
	Dirty Water Tank has picked up maximum amount of dirty water and has reached full line	Empty Dirty Water Tank and make sure to make slow cleaning passes back and forth while cleaning
	Brush Roll Window is not latched in place	Turn Power OFF / Unplug machine and re-install Brush Roll Window
	Debris channel in foot is clogged	Clean the channel with a paper towel
	Filter clogged by debris	Remove debris clogging the filter screen and clean the filter
Brush Roll is not turning and/or 3 solid red LED lights	Brush Roll is not installed properly	Turn Power OFF / Unplug machine and follow instructions on page 14 for replacing Brush Roll
	Machine is standing upright	Recline machine to turn the Brush Roll on
	Obstruction has caused Brush Roll to stop rotating	Turn Power OFF / Unplug machine and remove Brush Roll Window and Brush Roll to clean hair and string off of brush ends
Machine won't turn on	Obstruction has caused Brush Roll to stop and shut down machine indicated by 3 solid red LED lights.	Unplug machine to reset the system. While the machine is unplugged, remove the Brush Roll Window and Brush Roll to clean hair and string off of brush ends
	Handle not inserted properly into body of machine	Remove the Handle and re-insert into the body of the machine making sure to push down until you hear a "click"
	Battery is dead	Place unit on 3-in-1 Docking Station and let charge for 4 hours.
Machine is leaking	Cap of Clean Water Tank is not closed properly	Remove the Clean Water Tank and re-apply the cap
Machine is streaking	Too much water applied	Go over area without spraying down water
	Previous floor care products used	Contact product manufacturer regarding how to remove
2 or 3 LED red lights flashing	Internal error	Restart unit. If issue does not resolve, contact Consumer Care.

Warranty

This warranty gives you specific legal rights, and you may also have other rights which may vary from state to state. If you need additional instruction regarding this warranty or have questions regarding what it may cover, please contact BISSELL® Consumer Care by E-mail or telephone as described below.

It may be necessary to obtain some of your personal information, such as a mailing address, to fulfill terms of this warranty. Any personal data will be handled pursuant to BISSELL's Privacy Policy, which can be found online at www.BISSELL.com/privacy-policy.

Limited Two-Year Warranty

Subject to the *EXCEPTIONS AND EXCLUSIONS identified below, upon receipt of the product BISSELL will repair or replace (with new, refurbished, lightly used, or remanufactured components or products), at BISSELL's option, free of charge from the date of purchase by the original purchaser, for two years, any defective or malfunctioning part.

See information below on "If your BISSELL product should require service".

This warranty applies to product used for personal, and not commercial or rental, service. This warranty does not apply to fans or routine maintenance components such as filters, belts or brushes. Damage or malfunction caused by negligence, abuse, neglect, unauthorized repair,

or any other use not in accordance with the user guide is not covered. This warranty will only be valid if the product is used in the same country in which it was sold.

BISSELL IS NOT LIABLE FOR INCIDENTAL OR CONSEQUENTIAL DAMAGES OF ANY NATURE ASSOCIATED WITH THE USE OF THIS PRODUCT. BISSELL'S LIABILITY WILL NOT EXCEED THE PURCHASE PRICE OF THE PRODUCT.

Some states do not allow the exclusion or limitation of incidental or consequential damages, so the above limitation or exclusion may not apply to you.

*EXCEPTIONS AND EXCLUSIONS FROM THE TERMS OF THE LIMITED WARRANTY

THIS WARRANTY IS EXCLUSIVE AND IN LIEU OF ANY OTHER WARRANTIES, EITHER ORAL OR WRITTEN. ANY IMPLIED WARRANTIES, WHICH MAY ARISE BY OPERATION OF LAW, INCLUDING THE IMPLIED WARRANTIES OF MERCHANTABILITY AND FITNESS FOR A PARTICULAR PURPOSE, ARE LIMITED TO THE TWO-YEAR DURATION FROM THE DATE OF PURCHASE AS DESCRIBED ABOVE.

Some states do not allow limitations on how long an implied warranty lasts, so the above limitation may not apply to you.

NOTE: Please keep your original sales receipt. It provides proof of date of purchase in the event of a warranty claim.

Service

If your BISSELL product should require service:

Contact BISSELL Consumer Care to locate a BISSELL Authorized Service Center in your area. If you need information about repairs or replacement parts, or if you have questions about your warranty, contact BISSELL Consumer Care.

Website:

www.BISSELL.com/service-centers

E-mail:

www.BISSELL.com/email-us

Call:

BISSELL® Consumer Care
1-800-237-7691
Monday - Friday 8am - 10pm ET
Saturday 9am - 8pm ET
Sunday 10am - 7pm ET

Please do not return this product to the store.

Other maintenance or service not included in the manual should be performed by an authorized service representative.

For any questions or concerns, BISSELL is happy to be of service. Contact us directly at 1-800-237-7691.

Register your product today!

Registering is quick, easy and offers you benefits over the lifetime of your product.

You'll receive:

BISSELL® Rewards Points

Automatically earn points for discounts and free shipping on future purchases.

Faster Service

Supplying your information now saves you time should you need to contact us with questions regarding your product.

Product Support Reminders and Alerts

We'll contact you with any important product maintenance reminders and alerts.

Special Promotions

Optional: Register your email to receive notice of offers, contests, cleaning tips, and more!

Visit www.BISSELL.com/registration!

Visit the BISSELL website: www.BISSELL.com

When contacting BISSELL, have model number of cleaner available.

Please record your Model Number: _____

Please record your Purchase Date: _____

NOTE: Please keep your original sales receipt. It provides proof of purchase date in the event of a warranty claim. See Warranty page for details.

Parts & Supplies

For Parts and Supplies, go to www.BISSELL.com and enter your model number in the search field.

We can't wait to hear from you!

Rate this product to let us (and our millions of friends and followers) know what you think!

www.BISSELL.com



©2018 BISSELL Homecare, Inc.
Grand Rapids, Michigan
All rights reserved. Printed in China
Part Number 161-6769.10/18
Visit our website at: www.BISSELL.com