

WASHER & DRYER

# WASHING MACHINE



## DAEWOO LAUNDRY CARE

THESE NEW LAUNDRY MACHINES WILL MAKE YOUR LIFE FEEL CLEANER AND HEALTHIER

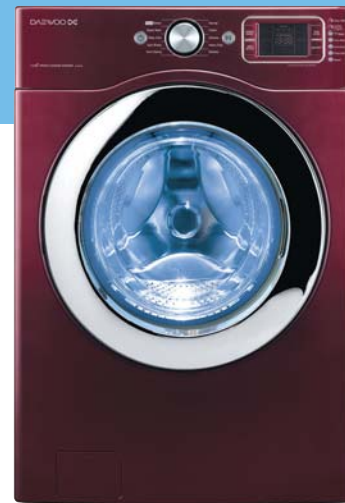


# WASHER

## SMART DETERGENT SYSTEM

Smart detergent System is a innovative equipment for using detergent, bleach and softener washing machines with a autoload sensor weigh laundry, put the optimal amount automatically, thus, this system prevents waste of detergent.

- 45 times of use in total is available with one time supplementation.
- Using liquid washing materials, cold water washing is expected as same performance as washing in warm water.



### CWD-WD13RCS

- Extra Large Capacity
- Intelligent Washing System
- Smart Detergent System
- Steam Refresh
- 4.5cu.ft Washing Capacity
- Max 1,300 RPM

## AUTO ALARM

When it is time to fill up detergent, both a LED display and an alarm automatically notice the user to supply detergent.

## BLEACH

When you want to put bleaching agent, press the 'Bleach' button.



## USEFUL 10 PRESET CYCLES

10 preset programs are designed to meet all of your laundry needs. Whether it's normal, cotton, delicate, or wool, the smart 10 programs are designed precisely to handle different types of loads.



## STEAM CLEAN

### Steam

Steam helps to remove laundry smell, and improve washing capacity through instantaneous heating water spray. It is as effective as steam through steam generator.

### 1 Steam Button

Heavy dirt clothes can be washed by pressing Steam Button.

### 2 Steam Refresh

Steam is generated in the course of washing. Steam prevents wrinkles and makes allergen-free clothes.

### 3 Speed Wash

Speed wash cycle enables light clothes to be washed quickly. As it takes only 33 minutes to finish washing, this course will be completed during your meal!



### 6 Baby Care

Special care is available for baby skin, babies are vulnerable to atopic dermatitis, sensitive to allergies.

### 9 Gym Shoes

Sports shoes washing cycle will enable convenient washing for running shoes whose washing is normally difficult due to dust, dirt, and bad smell.



### 4 Sanitary

Sanitary is for clothes like underwear, T-shirts made of white cotton materials, socks, towels, and so forth directly touching your skin. Washing clothes in hot water will enable sterilization and deodorization

### 7 Drum Cleaning

Monthly cleaning for a tub interior using 'Drum cleaning cycle' is recommended: this will remove fine residues and water stains.

### 10 Delay Wash

In case users want to program the washing cycle to finish up maximum 12 hours later, this option is useful, especially if different electricity rate are changed based on time zones.

### 5 Custom Program

Users can program frequently-used drying cycle. Once programmed, users can recall the setting whenever needed.



### 8 Night Time

Night time is useful when operating the machine at late night. By reducing noise, you can sleep like a top.

### 11 Rinse + Spin

To smooth out & soften your clothes which were left alone for quite some time after washing.



## SAFETY



### Child Lock

Child Lock prevents unwanted situations where children push wrong buttons and disturb washing cycles.

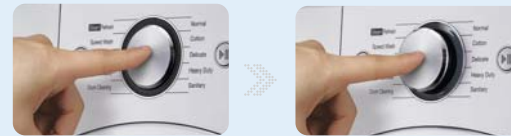


### Door Lock

To prevent accidental opening, the door stays locked throughout the cycle.

### Auto Diagnosis

When there is malfunction, display will let user know the problem so that proper steps can be taken to repair the units safely.



### POP UP KNOB

Softly press the button in the center to make it pop up, which makes the use more convenient.

## DIRECT DRIVE MOTOR

The advanced brushless DD motor rotates the drum directly without belt and pulley. As the power is directly delivered to the drum, unwanted vibration and noise are minimized, and energy consumption is optimized.

## 4.5 CU.FT

A spacious drum capacity of 4.5cu.ft enables washing large bath towels and all types of bulky bed linens. This ample tub brings convenience to families with large laundry needs.



## 4 POINTS SUPPORTING DAMPER

Firm, 4-points damper keeps the drum at an optimal angle, delivering most stable movement and balance during washing and fast spin-drying.



## PUMP FILTER

While water flows out, the pump filters dust, so laundry could be even cleaner.



### CWD-WD13WCS

- Extra Large Capacity
- Intelligent Washing System
- Steam Refresh
- Direct Drive Motor
- 4.5 cu.ft. Washing Capacity
- Max 1,300rpm
- Pop Up Knob
- 10° Inclined Drum
- Deluxe Chrome door rim
- Course Indicator

### CWD-WD13RCS

- Extra Large Capacity
- Intelligent Washing System
- Direct Drive Motor
- 4.5 cu.ft. Washing Capacity
- Max 1,300rpm
- Pop Up Knob
- 10° Inclined Drum
- Deluxe Chrome door rim
- Course Indicator

### CWD-WD12WS

- Extra Large Capacity
- Intelligent Washing System
- Direct Drive Motor
- 4.2 cu.ft. Washing Capacity
- Max 1,200rpm
- Pop Up Knob
- 10° Inclined Drum
- Deluxe Silver door rim
- Course Indicator

### CWD-WD10WW

- Extra Large Capacity
- Intelligent Washing System
- Direct Drive Motor
- 4.0 cu.ft. Washing Capacity
- Max 1,000rpm
- Pop Up Knob
- 10° Inclined Drum
- Course Indicator



# DRYER



## Energy Saving

### VERTICAL HEATING SYSTEM

Patented Vertical heating unit helps reduce the energy consumption.



< Other Dryer >



< New Technology >

### BIG DRUM(7.3CU.FT)

#### Stainless Steel

A large-size drum has many benefits: fast drying time, quiet operation and high energy-efficiency.



### Technical Advantage

#### ▶ Minimizing Energy Loss

Energy loss is minimized by preventing the loss of heat.

#### ▶ Saving Drying Time

Pre-heating system increases internal temperature much quickly.

#### ▶ Optimal Drying Performance

With low energy and short time.

### SENSOR DRY & MANUAL DRY

Users can choose between two drying modes: in sensor dry mode, sensor sets the drying time and temperature automatically, from checking the weight of laundry. In manual dry mode, users can set drying time and temperature manually.

### EASY TO USE

Various user-friendly functions make the operation of the dryer easier.



### STEAM GENERATOR

Steam generator creates steam with water under high pressure. After water is boiled, steam spouts out immediately. Visual effects are maximized at the front door.

#### 1 Steam Refresh

Strong steam prevents creases or wrinkles on laundry and enables you to feel neat and tidy as if you were wearing new clothes.

#### 2 Wrinkle Care

To prevent the laundry becoming wrinkled the washing tub rotates for about 10 seconds every 10-15 minutes. (Only for cotton & Synthetic course)

#### 3 Air Dry

Damp or lusterless clothes due to long storage inside closets or drawers are treated with warm air, which will make them neat and tidy for you to wear right away.

#### 6 Iron Dry

Iron dry optimizes conditions for ironing.

#### 9 Gym Shoes

This neatly dries running shoes which are difficult to dry after washing as if they were dried in the sun.

#### 4 Rack Dry

When drying delicate articles like knitwear, sweaters or shoes, a rack may be used to prevent warping.

#### 7 Reduce Static

Reduce Static removes static electricity completely. This function prevents foreign materials such as dust from sticking to clothes after washing

#### 10 Damp Dry Beep

This rings the buzzer to inform the user when the laundry is damp-dried.

#### 5 Custom Program

Users can program frequently-used drying cycle. Once programmed, by pushing 'Custom Program' button, users can recall the setting whenever needed.

#### 8 Time Control

Users can designate a drying time from 30 minutes to 2 hours.

#### LED Display

This enables to see the operation status of the machine at one glance as it displays the status of operation.

## SAFETY



### Door Open Sensor

Operating a dryer with its door open can be very dangerous because the machine emits hot steam.

To prevent such hazard, a signal is turned on when the door is open.



### Child Lock

Child Lock prevents troublesome situations where children push wrong buttons and disturb drying cycles.



### Error Code Alarm

In case of the dryer malfunctions, 'Error Code Alarm' goes off to guide users for troubleshooting.



### CLEAN FILTER

Filter is installed on the front part of a dryer, so it is easy to remove collected dust from the filter.



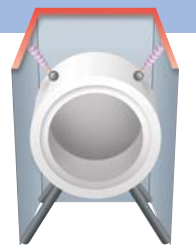
### RACK DRY

When drying delicate garment like knitwear, sweaters or shoes, a rack may be used to prevent deformation.

## WASHER & DRYER

### UNIFRAME CABINET

Rigid Uniframe Cabinet Construction provides quiet and soft operation.



### PEDESTAL

A 15"-high, spacious drawer can be installed at the bottom to store detergent and other laundry items. The drawer raises washer and dryer to convenient height.



### CWR-WE(G)13RCS

- Extra Large Capacity
- Vertical Heating System
- Smart Care Drying System
- Steam Refresh
- Wrinkle Care System
- 7.3cu.ft. Drying Capacity
- Pop Up Knob
- Deluxe Chrome Door Rim
- Rack dry
- Course Indicator
- Child Lock

Also available in gas



### CWR-WE(G)13WCS

- Extra Large Capacity
- Vertical Heating System
- Smart Care Drying System
- Steam Refresh
- Wrinkle Care System
- 7.3cu.ft. Drying Capacity
- Pop Up Knob
- Deluxe Chrome Door Rim
- Rack dry
- Course Indicator
- Child Lock

Also available in gas



### CWR-WE(G)12WS

- Extra Large Capacity
- Vertical Heating System
- Smart Care Drying System
- 7.3cu.ft. Drying Capacity
- Pop Up Knob
- Deluxe Silver Door Rim
- Rack dry
- Course Indicator
- Child Lock

Also available in gas



### CWR-WE(G)10WW

- Extra Large Capacity
- Vertical Heating System
- Smart Care Drying System
- 7.0cu.ft. Drying Capacity
- Pop Up Knob
- Course Indicator
- Child Lock

Also available in gas

# WASHER

## SPECIFICATION



MODEL NAME	CWD-WD13RCS	CWD-WD13WCS	CWD-WD12RS	CWD-WD12WS	CWD-WD10RR	CWD-WD10WW	
Electronical knob	○	○	○	○	○	○	
Pop Up Knob	○	○	○	○	○	○	
Washing Capacity (IEC)	4.5 cu. ft	4.5 cu. ft	4.2 cu. ft	4.2 cu. ft	4.0 cu. ft	4.0 cu. ft	
Energy Star	○	○	○	○	○	○	
Max Spin Speed	1300 rpm	1300 rpm	1200 rpm	1200 rpm	1000 rpm	1000 rpm	
Motor	DD Motor	DD Motor	DD Motor	DD Motor	DD Motor	DD Motor	
COLOR	Body	RED	WHITE	RED	WHITE	RED	WHITE
	Door	CHROME	CHROME	SILVER	SILVER	RED	WHITE
Door size	400mm	400mm	400mm	400mm	400mm	400mm	
No. of Water Temp. Settings	4 ( extra hot, hot, warm, cold )						
No. of Spin Speeds	5 ( ext.high, high, med, low, no spin )						
No. of Water levels	Automatically adjusts						
No. of Soil Levels	5	5	5	5	5	5	
<b>SMART DETERGENT SYSTEM</b>							
	○	-	-	-	-	-	
PROGRAM	COTTON	○	○	○	○	○	○
	NORMAL	○	○	○	○	○	○
	PERM PRESS	○	○	○	○	○	○
	DELICATE	○	○	○	○	○	○
	WOOL	○	○	○	○	○	○
	WHITES	○	○	○	○	○	○
	HEAVY DUTY	○	○	○	○	○	○
	BULKY/LARGE	○	○	○	○	○	○
	SANITARY	○	○	○	○	○	○
	SPEED WASH	○	○	○	○	○	○
	DRUM CLEANING	○	○	○	○	○	○
	BABY CARE	○	○	○	○	○	○
	STEAM REFRESH	○	○	○	○	○	○
	AIR WASH	○	○	○	○	○	○
GYM SHOES	○	○	○	○	○	○	
ADDITIONAL	PRE-WASH	○	○	○	○	○	○
	STEAM	○	○	○	○	○	○
	DELAY WASH	12 hours	12 hours	12 hours	12 hours	12 hours	12 hours
	CUSTOM PROGRAM	○	○	○	○	○	○
	SOIL LEVEL	○	○	○	○	○	○
	RINSE+SPIN	○	○	○	○	○	○
	EXTRA WASH	○	○	○	○	○	○
	EXTRA RINSE	○	○	○	○	○	○
	RINSE HOLD	○	○	○	○	○	○
	NIGHT TIME	○	○	○	○	○	○
BLEACH	○	○	○	○	○	○	
TECHNICAL	FOAM REMOVAL FUNCTION	○	○	○	○	○	○
	LEVELLING LEGS	4 legs adjustable	4 legs adjustable	4 legs adjustable	4 legs adjustable	4 legs adjustable	4 legs adjustable
	OPTIMATICALLY BALLANCING	○	○	○	○	○	○
SAFETY	DOOR LOCK	○	○	○	○	○	○
	CHILD LOCK	○	○	○	○	○	○
	ERROR CODE ALARM	○	○	○	○	○	○
	AUTO DIAGNOSIS	○	○	○	○	○	○
Dimension (Net, WxDxH)	686 x 807 x 1020	686 x 807 x 1020	686 x 807 x 1020	686 x 807 x 1020	686 x 807 x 1020	686 x 807 x 1020	
Dimension (Gross, WxDxH)	760 x 835 x 1093	760 x 835 x 1093	760 x 835 x 1093	760 x 835 x 1093	760 x 835 x 1093	760 x 835 x 1093	
Net Weight (Kg)	98.0 Kg	94.0 Kg	93.0 Kg	93.0 Kg	93.0 Kg	93.0 Kg	
Gross Weight (Kg)	102.0 Kg	98.0 Kg	97.0 Kg	97.0 Kg	97.0 Kg	97.0 Kg	
Quantity 40FT/40HC	84 sets	84 sets	84 sets	84 sets	84 sets	84 sets	

# DRYER

## SPECIFICATION



MODEL NAME	CWR-WE(G)13RCS	CWR-WE(G)13WCS	CWR-WE(G)12RS	CWR-WE(G)12WS	CWR-WE(G)10RR	CWR-WE(G)10WW	
Electronical knob	○	○	○	○	○	○	
Pop Up Knob	○	○	○	○	○	○	
Drying Capacity (IEC)	7.3	7.3	7.3	7.3	7.0	7.0	
COLOR	Body	RED	WHITE	RED	WHITE	RED	WHITE
	Door	CHROME	CHROME	SILVER	SILVER	RED	WHITE
Door size	400mm	400mm	400mm	400mm	400mm	400mm	
No. of Temp. Settings	5	5	5	5	5	5	
No. of Time Settings	5 ( 60, 50, 40, 30, 20min )						
No. of Dry levels	5 ( very, more, normal, less, damp )						
PROGRAM	<b>SENSOR DRY PROGRAM</b>						
	COTTON/TOWELS	○	○	○	○	○	○
	NORMAL	○	○	○	○	○	○
	PERM PRESS	○	○	○	○	○	○
	HEAVE DUTY	○	○	○	○	○	○
	BULKY/LARGE	○	○	○	○	○	○
	DELICATE	○	○	○	○	○	○
	ULTRA DELICATE	○	○	○	○	○	○
	BLANKET	○	○	○	○	○	○
	<b>MANUAL DRY PROGRAM</b>						
	SPEED DRY	○	○	○	○	○	○
	FRESHEN UP	○	○	○	○	○	○
	STEAM REFRESH	○	○	○	○	○	○
	IRON DRY	○	○	○	○	○	○
	AIR DRY	○	○	○	○	○	○
	WARM UP	○	○	○	○	○	○
GYM SHOES	○	○	○	○	○	○	
ADDITIONAL	RACK DRY	○	○	○	○	○	
SELECTION	WRINKLE CARE	○	○	○	○	○	○
	TIME CONTROL	○	○	○	○	○	○
	ANTI BACTERIAL	○	○	○	○	○	○
	DAMP DRY BEEP	○	○	○	○	○	○
	CUSTOM PROGRAM	○	○	○	○	○	○
	REDUCE STATIC	○	○	○	○	○	○
	END OF CYCLE BEEPER	○	○	○	○	○	○
TECHNICAL	MOISTURE SENSOR	○	○	○	○	○	
SAFETY	DOOR LOCK	○	○	○	○	○	
	CHILD LOCK	○	○	○	○	○	
	ERROR CODE ALARM	○	○	○	○	○	
	AUTO DIAGNOSIS	○	○	○	○	○	
Dimension (Net, WxDxH)	686 x 823 x 1,020	686 x 823 x 1,020	686 x 823 x 1,020	686 x 823 x 1,020	686 x 823 x 1,020	686 x 823 x 1,020	
Dimension (Gross, WxDxH)	751 x 873 x 1,079	751 x 873 x 1,079	751 x 873 x 1,079	751 x 873 x 1,079	751 x 873 x 1,079	751 x 873 x 1,079	
Net Weight (Kg)	61.0 Kg	60.0 Kg	60.0 Kg	58.5 Kg	58.5 Kg	58.5 Kg	
Gross Weight (Kg)	66.0 Kg	65.0 Kg	65.0 Kg	63.0 Kg	63.0 Kg	63.0 Kg	
Quantity 40FT/40HC	78 sets	78 sets	78 sets	78 sets	78 sets	78 sets	